




UNDER CONSTRUCTION



Measure CK Projects

CBOC Meeting: November 4, 2019



UNDER CONSTRUCTION



Pinetree Community School Project
Project 19-6PT

Parking Lot

- Parking Lot Improvements
- Over-Excavation
- Re-Compaction and Placement of New Marquis



CONSTRUCTION

Parking Lot Improvements



CONSTRUCTION



CONSTRUCTION



CONSTRUCTION



CONSTRUCTION

- District Consultants determined that there was adequate compaction based on geotechnical requirements for the parking lot.
- Reduced the depth of the excavation and re-compaction.
- Result: Savings to District

CONSTRUCTION

- Eliminated in the original scope of work an exit lane from the parking lot to the street.
- The exit lane would not have improved egress from the school site to the street.
- District also eliminated Parking Signs- as they were not necessary.
- Result: Savings to the District

CONSTRUCTION

- District selected a bolted panel as opposed to a welded panel.
- District made some modifications to the art work and design of the panels.
- Result: Cost to the District



CONSTRUCTION

- Approved at October 16, 2019 Board Meeting:
 - Change Orders
 - Four Change Orders
 - Savings: \$14,113.00 to District



Preparing for the Student Support Center

- Over Excavation
- Soils Report / Civil
- Compaction



CONSTRUCTION



NEW STUDENT SUPPORT CENTER

**BUILDING
RENDERING**



Preparation for New Marquis

- Full Color, Text, Pictures, Videos
- 7'7" Top of Sign
- 7'4" Wide
- DSA approved Footing



CONSTRUCTION





UNDER CONSTRUCTION



New Bathroom in Lower MPR

Pinetree Community School

CONSTRUCTION




Installation of
New Bathroom

CONSTRUCTION



CONSTRUCTION





UNDER CONSTRUCTION



Sulphur Springs Community School
Room 22

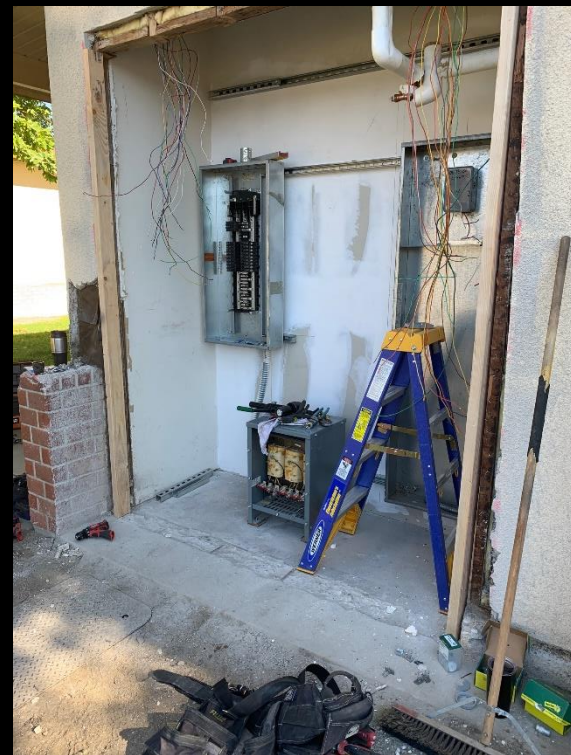
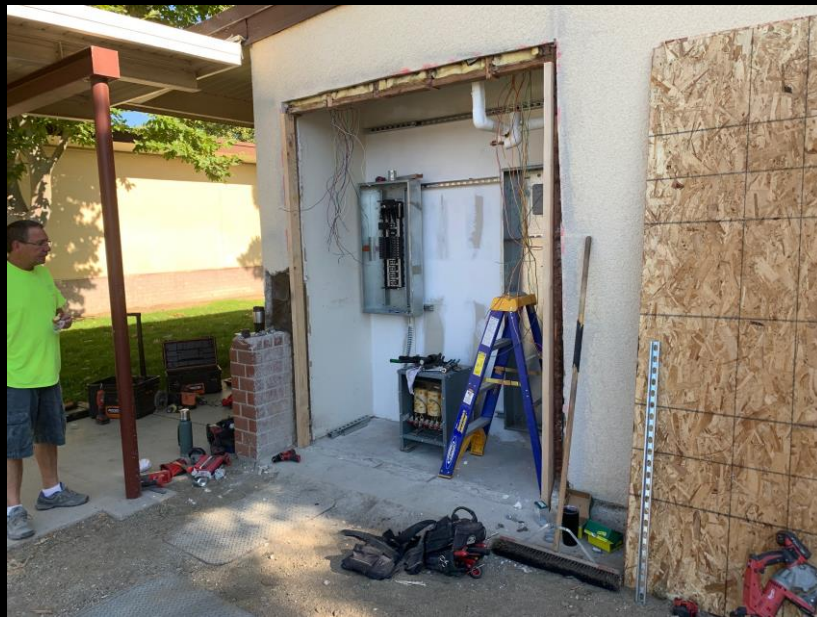


Before Construction



Supporting Optimal Learning Environment, Removal of Doors, Sound Proof Wall, Building Opening on the Outside


CONSTRUCTION



CONSTRUCTION



Inside
Classroom



UNDER CONSTRUCTION



Sulphur Springs Community School
Primary Yard

CONSTRUCTION

New Cinder Block Wall / Stucco



CONSTRUCTION

New Primary Play Structure



**Original
Structure**





- Fully Accessible for all children- Equal Play Opportunities for All
- California Distinguished Playground:
 - Intentional Design-Inclusive Play: Physical, Social, Cognitive, Communication, Sensory
 - Universally designed play that applies the 7 Principles of Inclusive Playground Design
 - Encourages Students to be:
 - Fair, Included, Smart, Independent, Safe, Active, Comfortable
- Completed, August 2019

National Demonstration Playground



Developmentally appropriate design that address the needs of the whole child!



SOCIAL/EMOTIONAL
For play to be truly inclusive, children need to be socially included. As children play together, they learn to cooperate, take turns, and engage in meaningful, creative, and imaginative play experiences that create lifelong memories. Providing places for children to feel emotionally secure allows them to belong and choose how and when to engage in play.

PHYSICAL
All children need opportunities to be physically active through play. Play environments that provide a variety of developmentally appropriate activities, offer healthy role, and challenge children of all abilities, create places where everyone wants to play.

SENSORY
Play is most meaningful in sensory-rich environments that encourage discovery and exploration. Sensory play through tactile, visual, auditory, smell and taste, vestibular, and proprioceptive experiences help us learn, understand the world around them.

COGNITIVE
Children learn through play and interacting with the people and world around them. Supporting creative play behaviors that stimulate development can help keep children engaged in meaningful play for longer periods of time. Opportunities for children to problem solve, think abstractly and develop cause and effect skills help provide unique hands-on opportunities to bring learning outside.

COMMUNICATION
Playgrounds can support the development of receptive and expressive language, allowing children to demonstrate what they know and express themselves. Language development occurs through social play behaviors and routines and is enhanced through developmentally appropriate play.









CONSTRUCTION



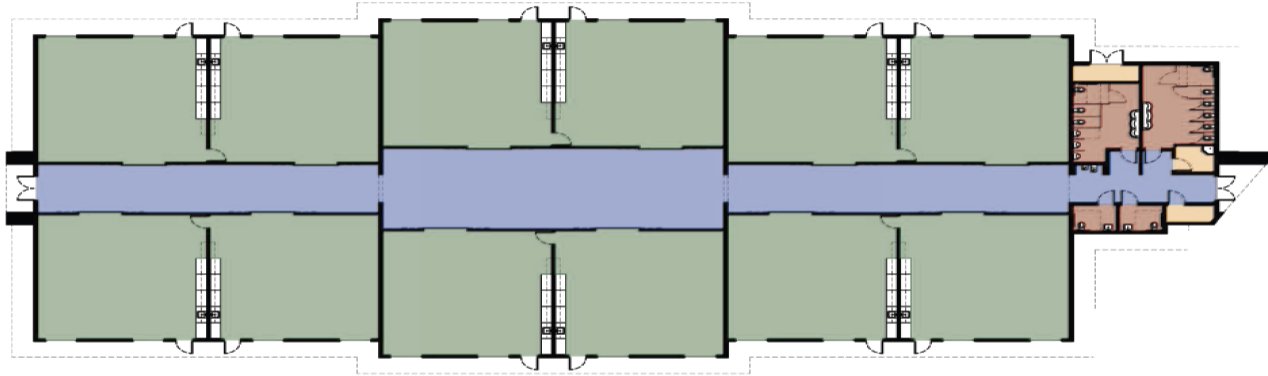
Vista Canyon Development

Sand Canyon Plaza
Development



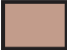

Preparing for New Housing Developments
12- Classroom Wing
Pinetree and Sulphur Springs Community Schools

CONSTRUCTION

CLASSROOM FLOOR PLAN Staggered Version



LEGEND

	Collaboration Space • 3,029 SF		Classroom Space • 958 SF ea. room		Restrooms		Support Space
---	-----------------------------------	---	--------------------------------------	---	-----------	---	---------------

*Gross Square Footage of Building = 16,173 SF

CONSTRUCTION

COLLABORATION SPACE View 2



CONSTRUCTION

CLASSROOM SPACE View 1



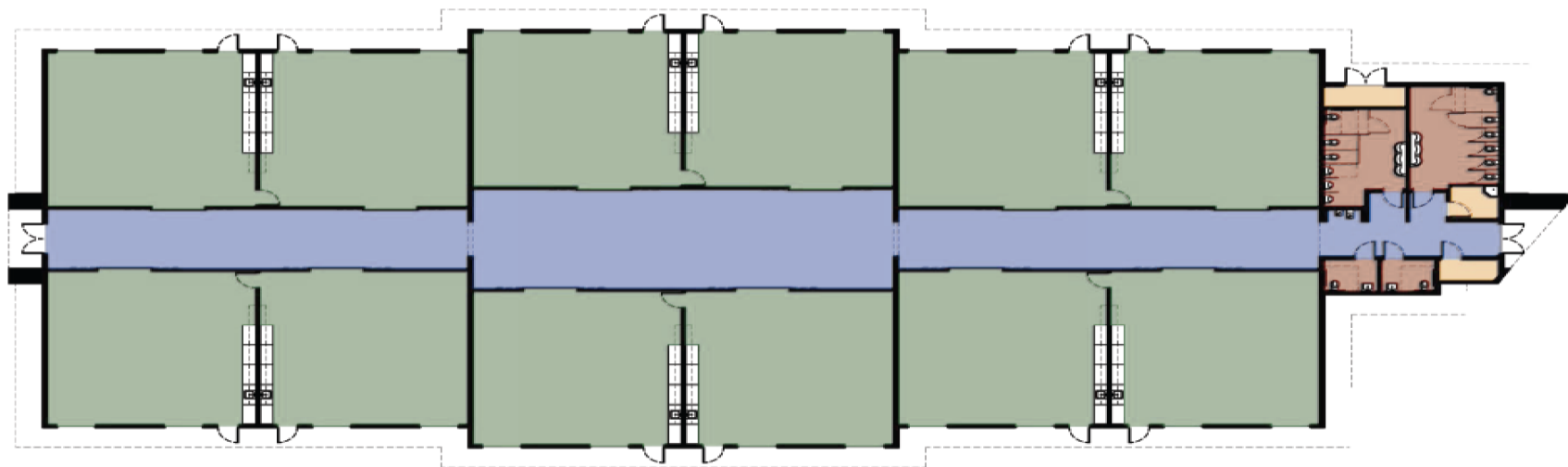
CONSTRUCTION



Single Story 12-Classroom Wing

Estimated Construction: Spring / Summer 2020

CLASSROOM FLOOR PLAN Staggered Version




LEGEND

	Collaboration Space		Classroom Space		Restrooms		Support Space
	• 3,029 SF		• 958 SF ea. room				

*Gross Square Footage of Building = 16,173 SF





UNDER CONSTRUCTION



Leona Cox Community School

Addition: Bathroom Room 207

CONSTRUCTION



From Planning to Action!

- Next Steps:
 - DSA:
 - Waiting: Final Approval Pending for PT Student Support Center
 - Waiting: Final Approval Pending for PT and SS 12-Classroom Wing
 - Waiting: Final Approval for Site Work for SS

Questions

