



Sulphur Springs Union School District

2012 General Obligation Bond Authorization

Measure CK

Citizens' Bond Oversight Committee Report

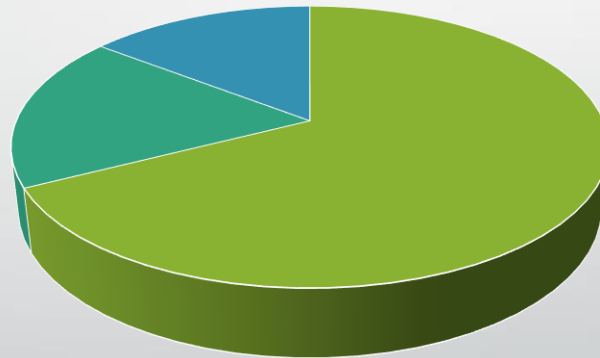
June 17, 2019

2012 MEASURE CK G.O. BOND ELECTION

Measure CK Overview

- On June 5, 2012, the voters of the Sulphur Springs School District (the "District") authorized Measure CK under the Proposition 39 statutes. Measure CK authorized the issuance of \$72 million in General Obligation Bonds (the "Bonds"). The proceeds of the Bonds are intended to be used to upgrade classrooms, libraries, science labs, old roofs, support classroom instruction in core subjects, pay off outstanding Certificates of Participation in order to relieve the District's General Fund, and attend to any other health and safety needs that the District deems necessary.

Measure CK G.O. Bonds \$72,000,000



■ Issued \$48,600,000

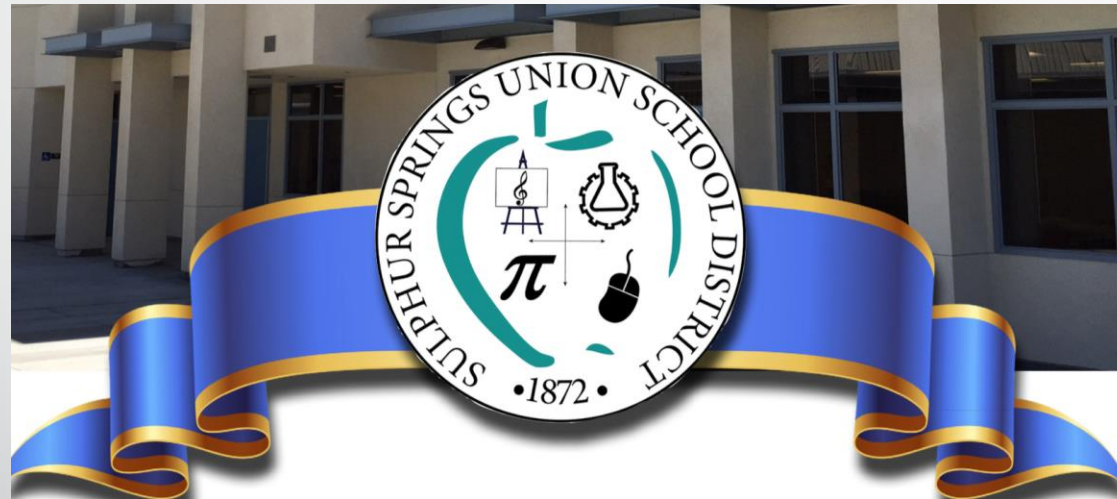
■ Partially pay down COP for previous projects \$12,900,000

■ Remaining authorization \$10,500,000

Working to Improve Facilities for our Children

District Projects Measure CK Dollars At Work!

Valley View Community School Home of the Vikings



Thank you for Voting Yes on Measure CK

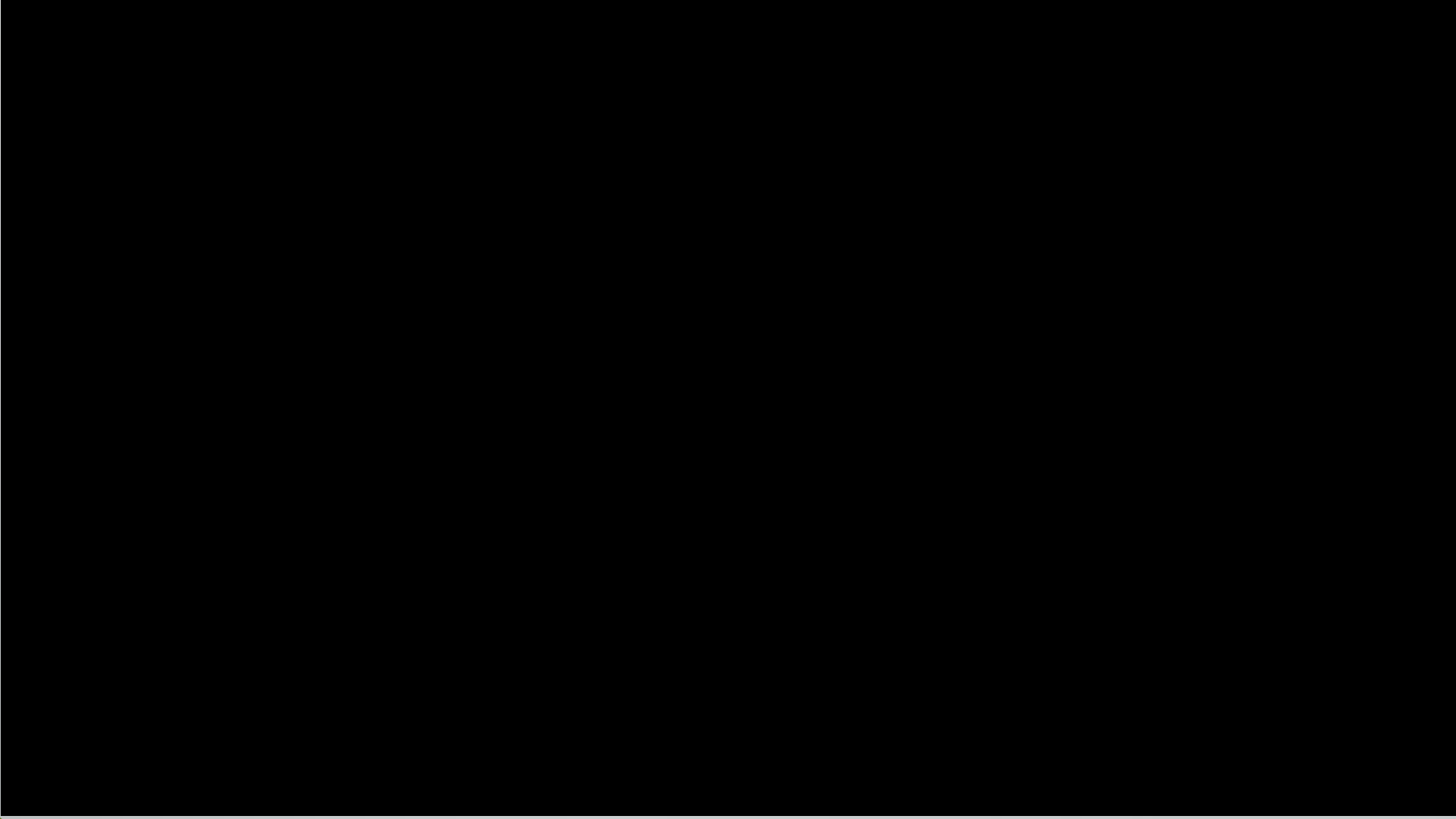
MEASURE CK G.O. BOND ELECTION

Valley View Modernization

Scope of Work:

1. Built a new 2-story classroom building containing:
 1. 21 classrooms
 2. New state-of-art library
 3. Conference rooms
 4. Occupational Therapy Room
 5. California Children Services Facility
 6. Offices to support Staff for Severe Program
 7. Nurse's Office
 8. Laundry Facilities
 9. Work Room for Staff
 10. New Restrooms for Students and Staff
2. New Administrative Office and Staff Lounges
3. Existing classrooms in main building upgraded for ADA Accessibility: Fire Alarm, Emergency Lighting, Fire Sprinklers
4. Improve accessibility by improving parking lot, new play structure, shade structure in primary yard







LEONA COX COMMUNITY SCHOOL
Home of the Cougars



New Playground

- Interactive panels with motion and sound elements
- Designed specifically for toddler's gripping range
- Provides various ways to communicate and opportunities for social games
- Allows children to interact and learn at the same time





PINETREE COMMUNITY SCHOOL

Home of the Pioneers



New Playground



Learning Center

- ❖ Library
- ❖ Makerspace Lab
- ❖ Multi-Media Room



Love of Reading

Flexible Seating

Multiple Learning Opportunities

Promotes Creativity, Collaboration, Critical Thinking

Flexible Seating



Multi-Media Room

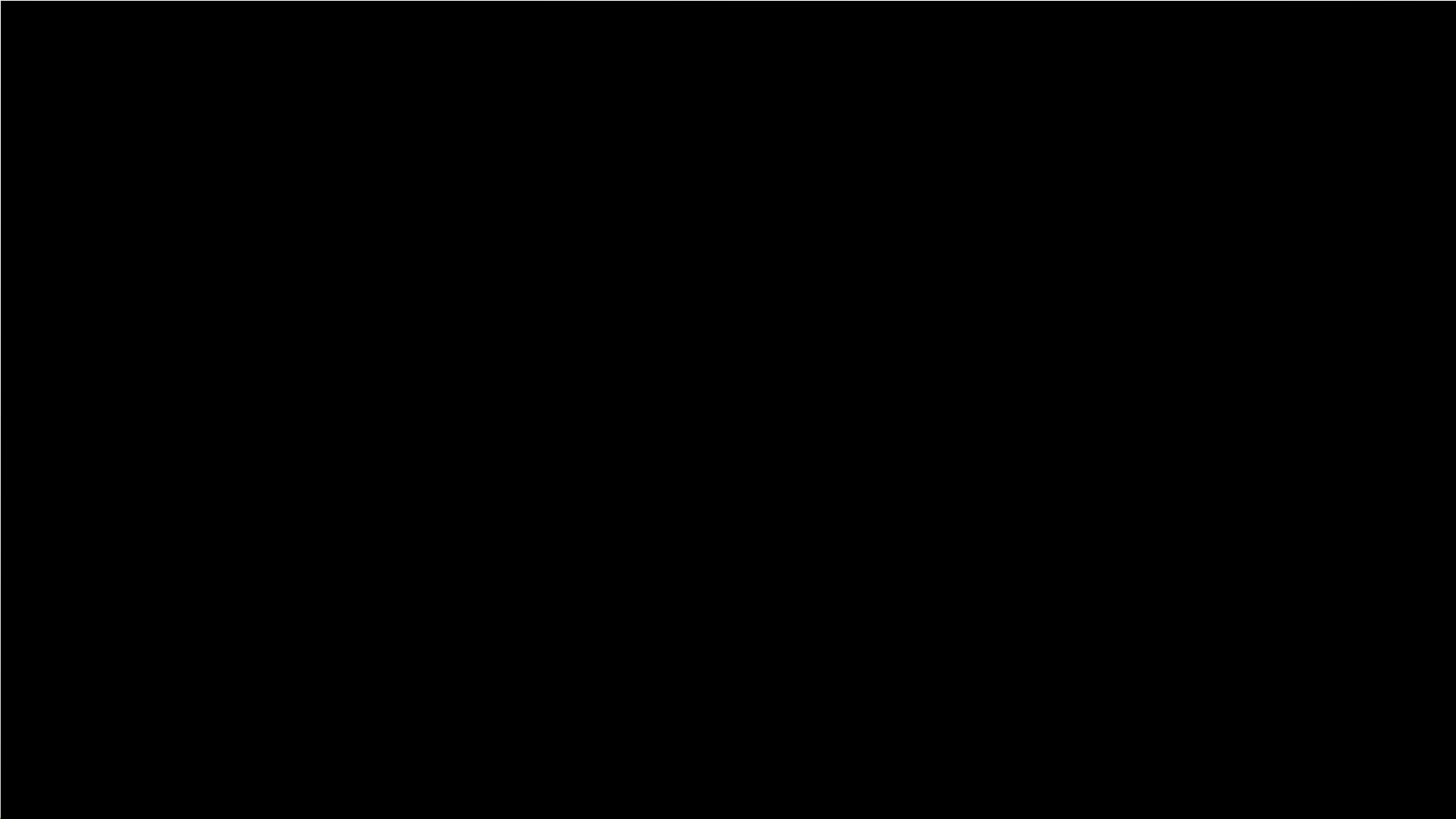


Maker Space Lab



Library





Preparation for New Student Support Center



Fencing – District Wide





Mitchell

Mint



Sulphur Springs

Fair Oaks





School Construction

2019-2022

New Primary Play Structure Sulphur Springs Community School



Present Play Area for
TK / Kinder Students



June- August, 2019

- Fully Accessible for all children- **Equal Play Opportunities for All**
- California Distinguished Playground:
 - Intentional Design-Inclusive Play: Physical, Social, Cognitive, Communication, Sensory
 - Universally designed play that applies the 7 Principles of Inclusive Playground Design
 - Encourages Students to be:
 - Fair, Included, Smart, Independent, Safe, Active, Comfortable
- Expected to be completed by August 2019



playability

Developmentally appropriate design that address the needs of the whole child!





Measure CK Dollars at Work!



UPRIGHT GREEN ACCENT BEIGE DECK BROWN ROTO BEIGE/SPRING GREEN HDPE BEIGE/SPRING GREEN/GREEN SHADE EVERGREEN ROOF NONE CABLE BLACK MAX-APEX-NONE

Sulphur Springs Elementary School
Canyon Country CA

697-124969C



544 Chestnut Street
Chattanooga, TN 37402
800.727.1907
playandpark.com



UPRIGHT GREEN ACCENT BEIGE DECK BROWN ROTO BEIGE/SPRING GREEN HDPE BEIGE/SPRING GREEN/GREEN SHADE EVERGREEN ROOF NONE CABLE BLACK MAX-APEX-NONE

Sulphur Springs Elementary School
Canyon Country CA

697-124969C

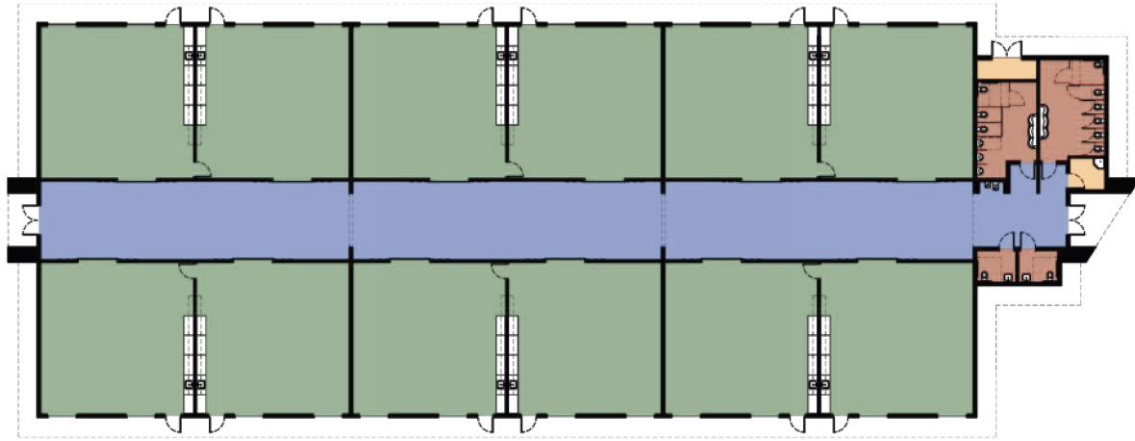


544 Chestnut Street
Chattanooga, TN 37402
800.727.1907
playandpark.com

Sulphur Springs Community School

- **Single Story, 12-Classroom Wing**
- **Support housing needs due to Vista Canyon Development**





PINETREE COMMUNITY SCHOOL

Fall, 2019



NEW STUDENT SUPPORT CENTER
BUILDING RENDERING



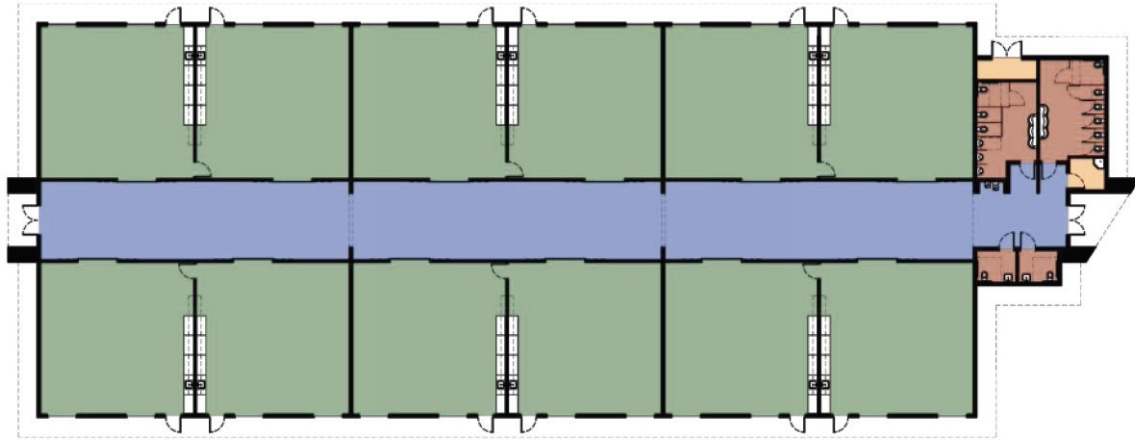


NEW STUDENT SUPPORT CENTER
BUILDING FLOOR PLAN

Pinetree Community School

- **Re-Design of Existing Administrative Building: Primary Classrooms, Restrooms, Staff Workroom**
- **Single Story, 12-Classroom Wing**
- **Support housing needs due to developments**





Financial: June 2017 – April 2019

• June 2017	\$ 299,299.50
• July 1, 2017 – June 30, 2018	\$ 871,479.42
• July 1, 2018 – April 30, 2019	<u>\$1,362,872.44</u>
	\$2,533,651.36

Questions

